



UniCrimp 200

Crimping Machine

Options/Spare Parts/Exploded Views

Software Version 2.0x / Edition 11.0 (08-2018)

Schleuniger AG

Bierigutstrasse 9
3608 Thun
Switzerland
P +41 (0)33 334 03 33
F +41 (0)33 334 03 34
info@schleuniger.ch
www.schleuniger.com

Schleuniger AG

Gewerbestrasse 14
6314 Unteraegeri
Switzerland
P +41 (0)41 754 53 53
F +41 (0)41 754 53 50
solutions@schleuniger.ch
www.schleuniger.ch

Schleuniger GmbH

Raiffeisenstrasse 14
42477 Radevormwald
Germany
P +49 (0)21 959 29-0
F +49 (0)21 959 29-105
info@schleuniger.de
www.schleuniger.com

Schleuniger Test Automation GmbH

Steinung 3.1
71131 Jettingen
Germany
P +49 74 52 74 062 80
F +49 74 52 74 062 90
info.testautomation@schleuniger.com
www.schleuniger.com

Schleuniger, Inc.

87 Colin Drive
Manchester, NH 03103
USA
P +1 (603) 668 81 17
F +1 (603) 668 81 19
sales@schleuniger.com
www.schleuniger-na.com

Schleuniger Japan Co., Ltd.

1726-15, Higashi-Naganuma,
Inagi-city, Tokyo
Japan
P +81 42 401 6581
F +81 42 379 3524
sales@schleuniger.co.jp
www.schleuniger.co.jp

Schleuniger Trading (Shanghai) Co., Ltd.

108, BH Center
7755 Zhongchun Rd
Shanghai, 20110
China
P +86 (21) 62 52 66 77
F +86 (21) 62 40 86 55
sales@schleuniger.com.cn
www.schleuniger.cn

Schleuniger Machinery (Tianjin) Co., Ltd.

A-101 & B-101, D9 Building, No 1 Xuefu West Road,
Xuefu Industrial Zone
Xiqing Qu, Tianjin Shi 300392
China
P +86 (22) 8371 3090
salesstj@schleuniger.com.cn
www.schleuniger.cn

TABLE OF CONTENTS

GENERAL

4.1	ABOUT THIS MANUAL	9
4.2	SAFETY NOTICE	9

OPTIONS / SPARE PARTS

EXPLODED VIEW DRAWINGS

6.1	MAIN CONSTRUCTION #420.001.001	16
6.2	BASE FRAME #420.100.001	18
6.3	COVERING #420.102.001	20
6.4	ROLE HOLDER #420.103.001	22
6.5	SLEDGE #420.105.001	24
6.6	TOOL CLAMPING #420.112.001	26
6.7	CONTACT OILER #420.109.001	28
6.8	KIT FOR PNEUMATIC APPLICATORS #420.111.001	30

TABLE OF PART

1.6035	11
1.9013	14
2.2038	11
2.2056	14
272.0016	13
404128	12
404129	13
405764	10
406605T	12
407193T	12
420.100.102	11
420.100.113	11
420.102.104	11
420.102.112	12
420.105.104	14
420.108.001	10
420.109.001	10
420.111.001	10
454928	10
457843	10
479453	11
627.0002	13
627.0014	13
N-3300	12
N-3301	12
N-3302	13
N-9251	13

TABLE OF PART DESCRIPTION

Bolt 22	11
Brush	13
Contact oiler	10
Crimp Drive	12
Crimp force monitoring ACO 05	10
Finger protection	11
Front panel complete (display, electronics, keypad)	12
Fuse 10 A/T SPT 5x20 (115 V)	13
Fuse 6.3 A/T 5x20 (230 V)	13
Grease Microlube GBUY 131	13
Hex key set	14
Hole cover	12
Kit for pneumatic applicators	10
LED Illumination factory installed	10
LED Illumination retrofit kit	10
Needle bearing NA 6904	11
Needle bearing NK S22	11
Packaging	14
Paper rewinder	10
Pedal	13
Photoelectric barrier	12
Power cord USA	13
Power cord, Europe	12
Power cord, Swiss	12
Safety cover	11
Scale	14
Slider	11

GENERAL

4.1 ABOUT THIS MANUAL

This document is part of the "*OPERATOR'S HANDBOOK*" and only valid as a whole.

The exploded view drawings contain all spare parts of the *UniCrimp 200*. However, for orders out of the exploded views, we strongly recommend to order complete assemblies.

4.2 SAFETY NOTICE

WARNING



Danger if operated by unqualified personnel!

Replacing components and adding options must only be carried out by technical specialists. Disregarding may lead to serious injury or death and to property damage to the machine.


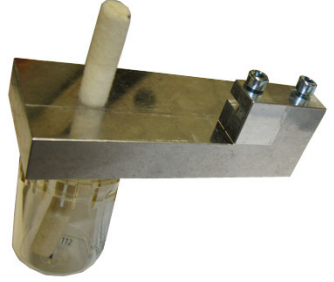
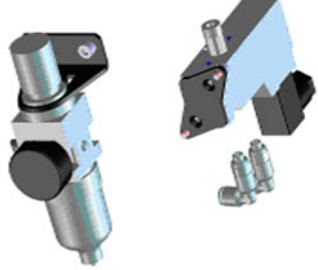

NOTICE


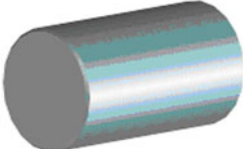



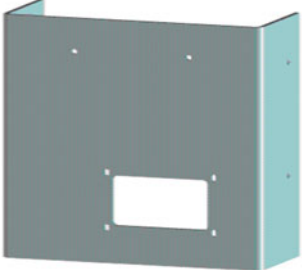


Caution, property damage!

Replacing components and adding options must only be carried out by technical specialists. Disregarding may lead to property damage.

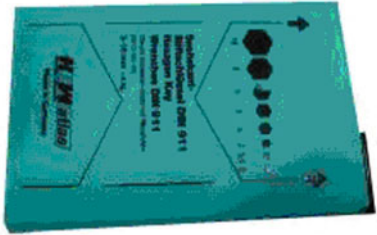


OPTIONS / SPARE PARTS

Material	Description	Model	Illustration
405764	Crimp force monitoring ACO 05		
420.109.001	Contact oiler		
420.111.001	Kit for pneumatic applicators		
420.108.001	Paper rewinder		
457843	LED Illumination retrofit kit		
454928	LED Illumination factory installed		

Material	Description	Model	Illustration
420.100.102	Slider		
420.100.113	Bolt 22		
1.6035	Needle bearing NA 6904		
2.2038	Needle bearing NK S22		
479453	Finger protection		
420.102.104	Safety cover		

Material	Description	Model	Illustration
420.102.112	Hole cover		
406605T	Crimp Drive		
407193T	Front panel complete (display, electronics, keypad)		
404128	Photoelectric barrier		
N-3300	Power cord, Swiss		
N-3301	Power cord, Europe		

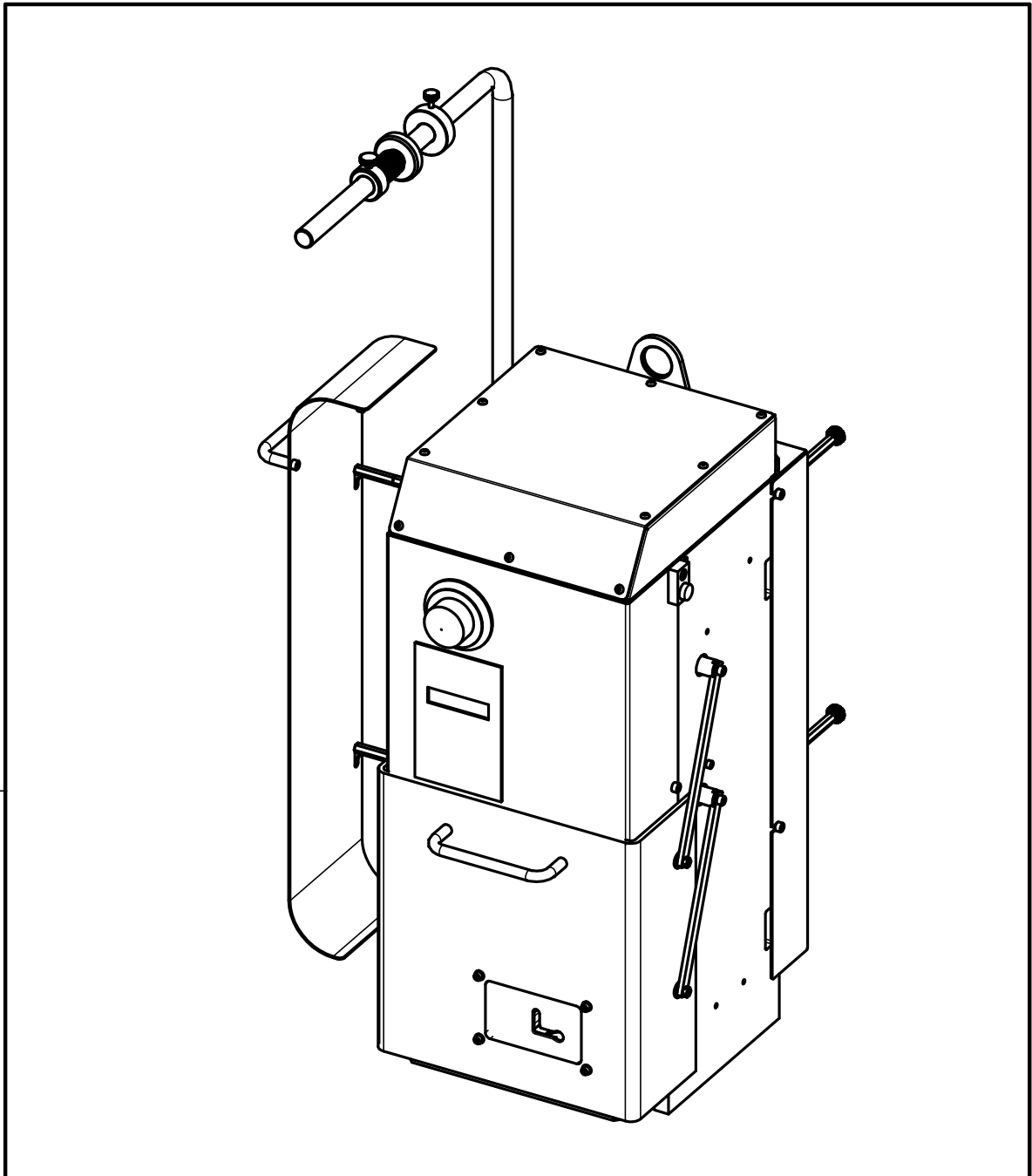
Material	Description	Model	Illustration
N-3302	Power cord USA		
627.0014	Fuse 6.3 A/T 5x20 (230 V)		
627.0002	Fuse 10 A/T SPT 5x20 (115 V)		
404129	Pedal		
N-9251	Grease Microlube GBUY 131		
272.0016	Brush		



Material	Description	Model	Illustration
1.9013	Hex key set		
2.2056	Packaging		
420.105.104	Scale		

EXPLODED VIEW DRAWINGS

6.1 MAIN CONSTRUCTION #420.001.001

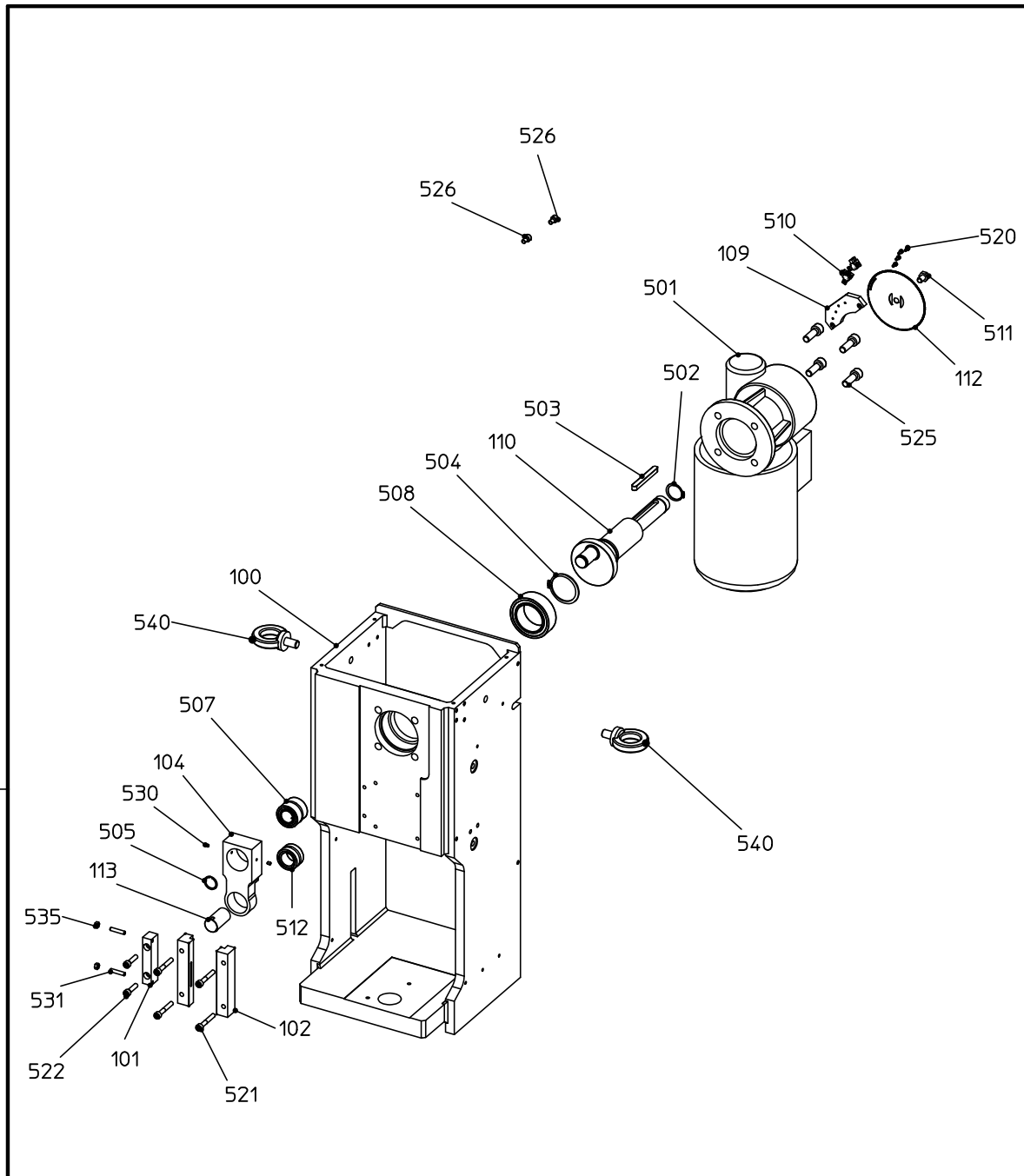
Pos.	Material	Drawing #	Further information
100	420.100.001	0	
101	420.102.001	0	
102	420.103.001	0	
103	420.104.001	0	
104	420.105.001	0	
105	420.112.001	0	



Nennmass	über bis	0 50	50 150	150 500	500 1000	1000 3000	3000 5000
Allgemein	Toleranzen	± 0,1	± 0,2	± 0,3	± 0,4	± 0,5	± 0,8
Material							
Kantenbruch	allgemein						
Werkstoff	Behandlung						
Oberflächen	Behandlung						
ARTIKEL Nr.	.	Ersatz für			Ersetzt durch		
UniCrimp 200		Maßstab 1:5		Gezeichnet	20.04.2005	MAR201	
				Gesehen	20.04.2005	MAR201	
 Schleuniger® To Be Precise.		Schleuniger CrimpTec AG Fabrikstrasse 172 4716 Welschenrohr/Switzerland		420.001.001		Änd.Index	-

6.2 BASE FRAME #420.100.001

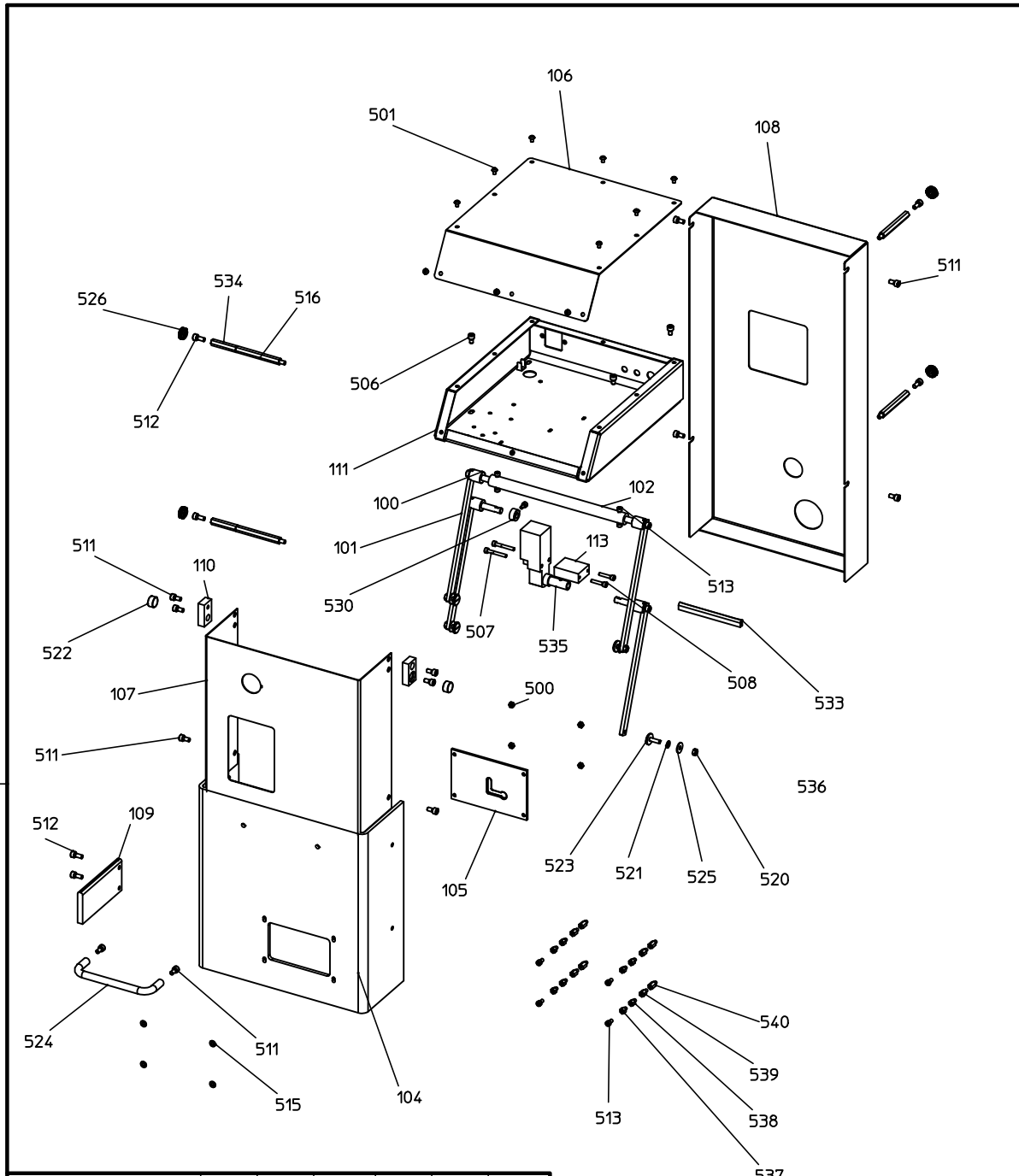
Pos.	Material	Drawing #	Further information
100	420.100.100	0	
101	420.100.101	0	
102	420.100.102	0	
104	420.100.104	0	
109	420.100.109	0	
110	420.100.110	0	
112	420.100.112	0	
113	420.100.113	0	
501	2.2002	0	
502	1.2041	0	
503	2.2003	0	
504	2.2004	0	
505	1.2122	0	
507	1.6035	0	
508	2.2005	0	
510	404128	0	
511	1.0329	0	
512	2.2038	0	
520	1.0124	0	
521	1.0256	0	
522	1.0177	0	
525	1.0275	0	
526	316803	0	
530	1.3106	0	
531	1.3055	0	
535	1.1024	0	
540	405994	0	



Nennmass	über bis	0 50	50 150	150 500	500 1000	1000 3000	3000 5000
Allgemein	Toleranzen	± 0,1	± 0,2	± 0,3	± 0,4	± 0,5	± 0,8
Material		B	19.03.2007	BIR201			
Kantenbruch allgemein							
Werkstoff Behandlung							
Oberflächen Behandlung							
ARTIKEL Nr.	.	Ersatz für		Ersetzt durch			
Grundgestell	Maßstab 1:5		Gezeichnet	15.04.2005	MAR201		
			Gesehen	15.04.2005	MAR201		
Schleuniger [®] To Be Precise.		Schleuniger CrimpTec AG Fabrikstrasse 172 4716 Welschenrohr/Switzerland			420.100.001		Änd.Index B

6.3 COVERING #420.102.001

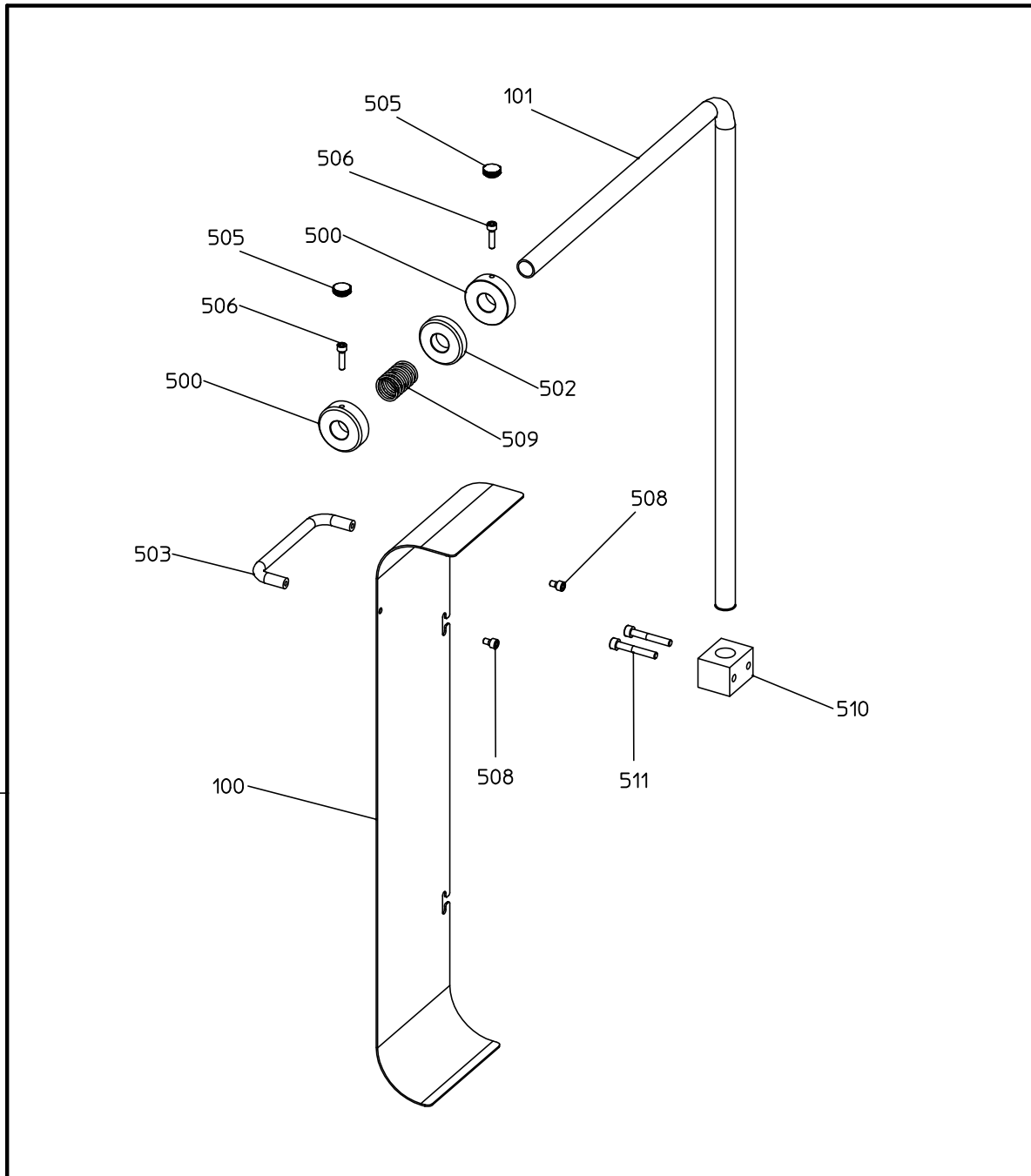
Pos.	Material	Drawing #	Further information
100	420.102.100	0	
101	420.102.101	0	
102	420.102.102	0	
104	420.102.104	0	
105	479453	0	
106	420.102.106	0	
107	421.102.111	0	
108	420.102.108	0	
109	420.102.109	0	
110	420.102.110	0	
111	420.102.111	0	
112	420.102.112	0	
113	421.102.113	0	
500	1.1004	0	
501	1.0230	0	
506	1.0254	0	
507	1.0114	0	
508	1.0355	0	
510	1.0131	0	
511	1.008	0	
512	1.007	0	
513	1.0232	0	
515	1.2004	0	
516	1.2176	0	
520	1.1024	0	
521	1.2043	0	
522	2.2016	0	
523	2.2015	0	
524	2.2014	0	
525	1.2071	0	
526	2.0032	0	
530	2.2011	0	
533	2.2028	0	
534	2.2007	0	
535	404125	0	
537	405741	0	
538	405742	0	
539	405743	0	
540	405744	0	



Nennmass	über bis	0 50	50 150	150 500	500 1000	1000 3000	3000 5000
Allgemein Toleranzen		± 0,1	± 0,2	± 0,3	± 0,4	± 0,5	± 0,8
Material		B					
Kantenbruch allgemein		18.01.2006					
Werkstoff Behandlung		BIR201					
Oberflächen Behandlung							
ARTIKEL Nr.	.	Ersatz für			Ersetzt durch		
Verschaltung	Maßstab 1:5		Gezeichnet	18.04.2005	MAR201		
			Gesehen	07.06.2005	MAR201		
Schleuniger® To Be Precise.		Schleuniger CrimpTec AG Fabrikstrasse 172 4716 Welschenrohr/Switzerland			420.102.001		Änd.Index B

6.4 ROLE HOLDER #420.103.001

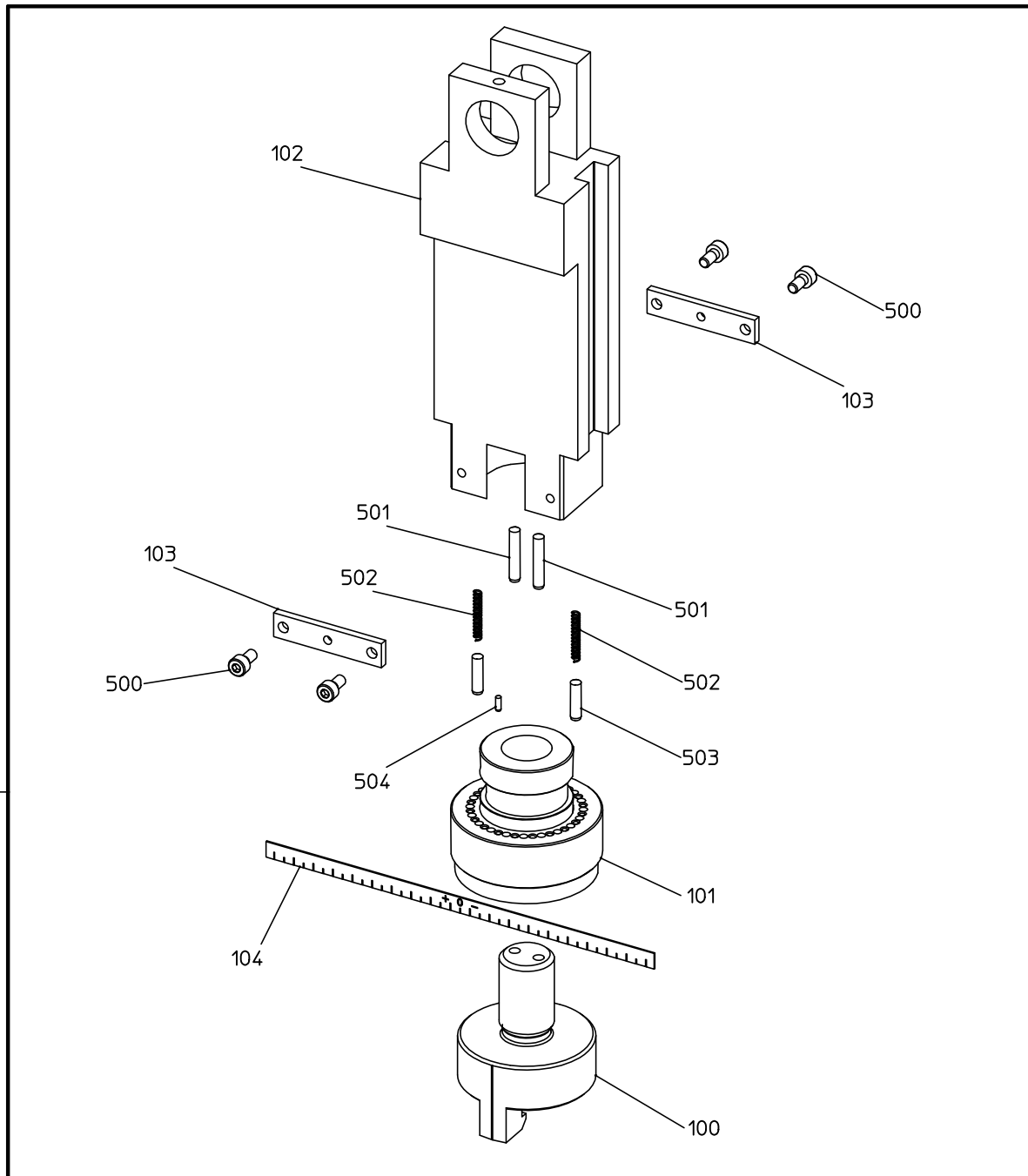
Pos.	Material	Drawing #	Further information
100	420.103.100	0	
101	420.103.101	0	
500	3.0147	0	
502	3.0148	0	
503	2.2014	0	
505	2.0032	0	
506	1.0085	0	
508	1.0254	0	
509	3.015	0	
510	2.2029	0	
511	1.0256	0	



Nennmass	über bis	0 50	50 150	150 500	500 1000	1000 3000	3000 5000
Allgemein	Toleranzen	± 0,1	± 0,2	± 0,3	± 0,4	± 0,5	± 0,8
Material		A		21.07.2005	MAR201		
Kantenbruch	allgemein						
Werkstoff	Behandlung						
Oberflächen	Behandlung						
ARTIKEL Nr.	.	Ersatz für		Ersetzt durch			
Rollenhalter		Maßstab 1:5		Gezeichnet	19.04.2005	MAR201	
				Gesehen	19.04.2005	MAR201	
Schleuniger [®] To Be Precise.		Schleuniger CrimpTec AG Fabrikstrasse 172 4716 Welschenrohr/Switzerland		420.103.001		Änd.Index A	

6.5 SLEDGE #420.105.001

Pos.	Material	Drawing #	Further information
100	420.105.100	0	
101	420.105.101	0	
102	420.105.102	0	
103	420.105.103	0	
104	420.105.104	0	
500	1.0232	0	
501	1.3039	0	
502	1.7016	0	
503	1.3117	0	
504	1.3031	0	



Nennmass	über	0	50	150	500	1000	3000
	bis	50	150	500	1000	3000	5000
Allgemein Toleranzen		± 0,1	± 0,2	± 0,3	± 0,4	± 0,5	± 0,8

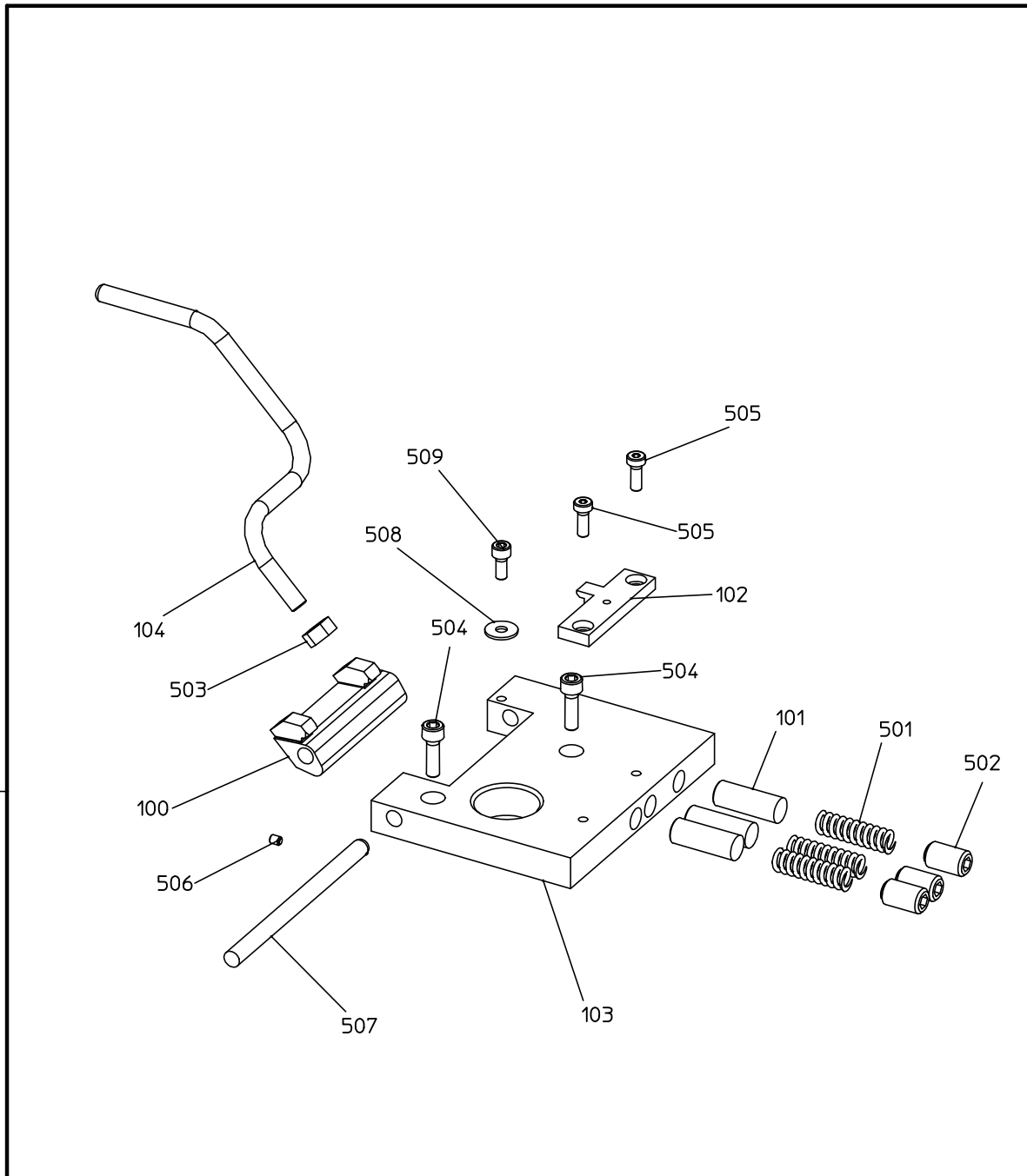
Material							
Kantenbruch allgemein							
Werkstoff Behandlung							
Oberflächen Behandlung							

ARTIKEL Nr.	.	Ersatz für	Ersetzt durch			
Schlitten	Maßstab 1:2		Gezeichnet	19.04.2005	MAR201	
			Gesehen	19.04.2005	MAR201	

Schleuniger [®] To Be Precise.	Schleuniger CrimpTec AG Fabrikstrasse 172 4716 Welschenrohr/Switzerland	420.105.001	Änd.Index
			-

6.6 TOOL CLAMPING #420.112.001

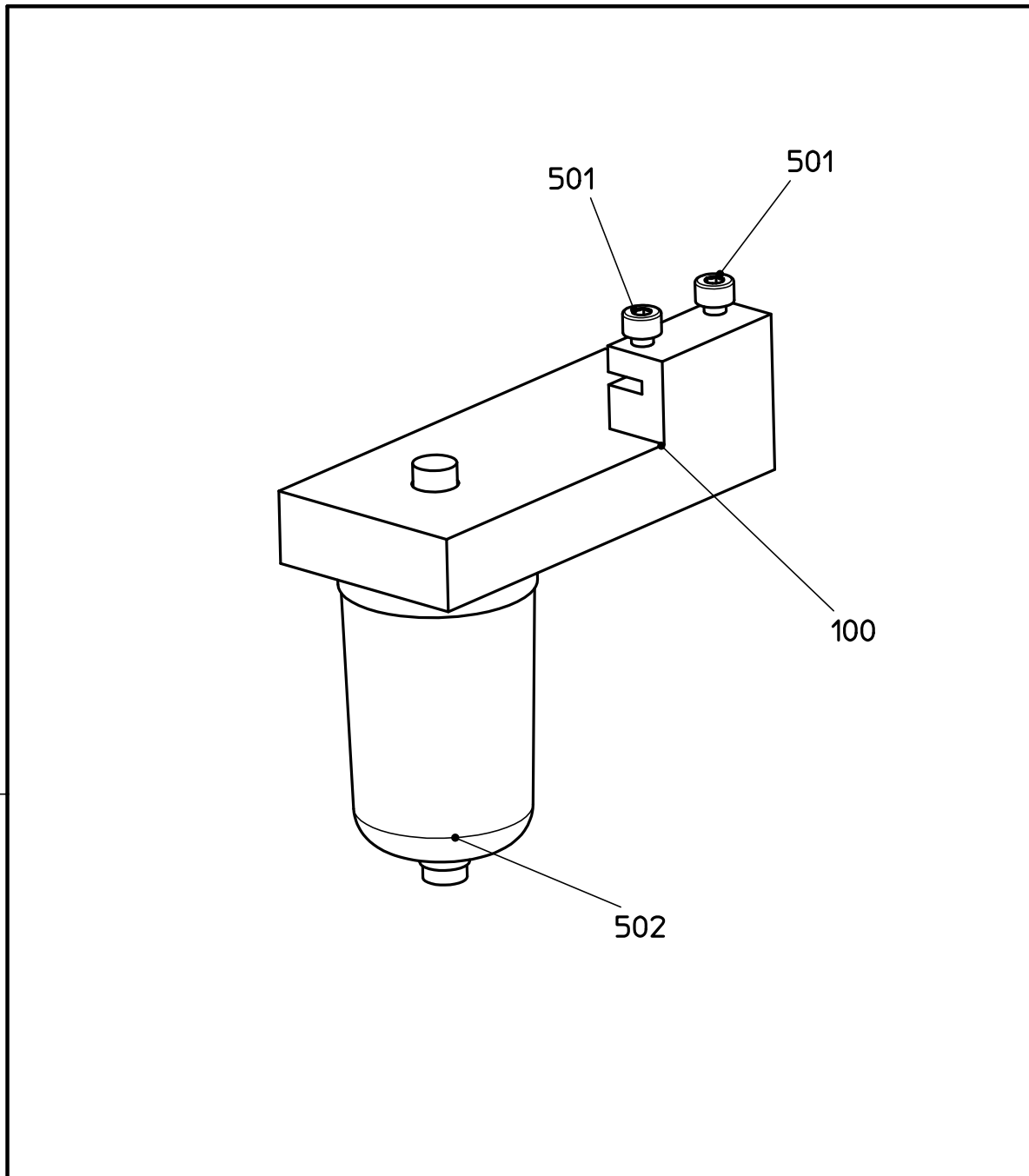
Pos.	Material	Drawing #	Further information
100	420.112.100	0	
101	420.112.101	0	
102	420.112.102	0	
103	420.112.103	0	
104	420.112.104	0	
501	2.2036	0	
502	1.3238	0	
503	1.1005	0	
504	1.0040	0	
505	1.0334	0	
506	1.3106	0	
507	2.2037	0	
508	1.2071	0	
509	1.007	0	



Nennmass	über	0	50	150	500	1000	3000		
	bis	50	150	500	1000	3000	5000		
Allgemein Toleranzen		± 0,1	± 0,2	± 0,3	± 0,4	± 0,5	± 0,8		
Material									
Kantenbruch allgemein									
Werkstoff Behandlung									
Oberflächen Behandlung									
ARTIKEL Nr.	.	Ersatz für			Ersetzt durch				
Werkzeugspanner					Maßstab 1:2		Gezeichnet	19.04.2005	MAR201
							Gesehen	19.04.2005	MAR201
Schleuniger® To Be Precise.					Schleuniger CrimpTec AG Fabrikstrasse 172 4716 Welschenrohr/Switzerland			420.112.001	
								Änd.Index -	

6.7 CONTACT OILER #420.109.001

Pos.	Material	Drawing #	Further information
100	420.109.100	0	
500	2.0621	0	
501	1.0232	0	
502	2.2030	0	



Nennmass	über bis	0 50	50 150	150 500	500 1000	1000 3000	3000 5000
Allgemein	Toleranzen	± 0,1	± 0,2	± 0,3	± 0,4	± 0,5	± 0,8

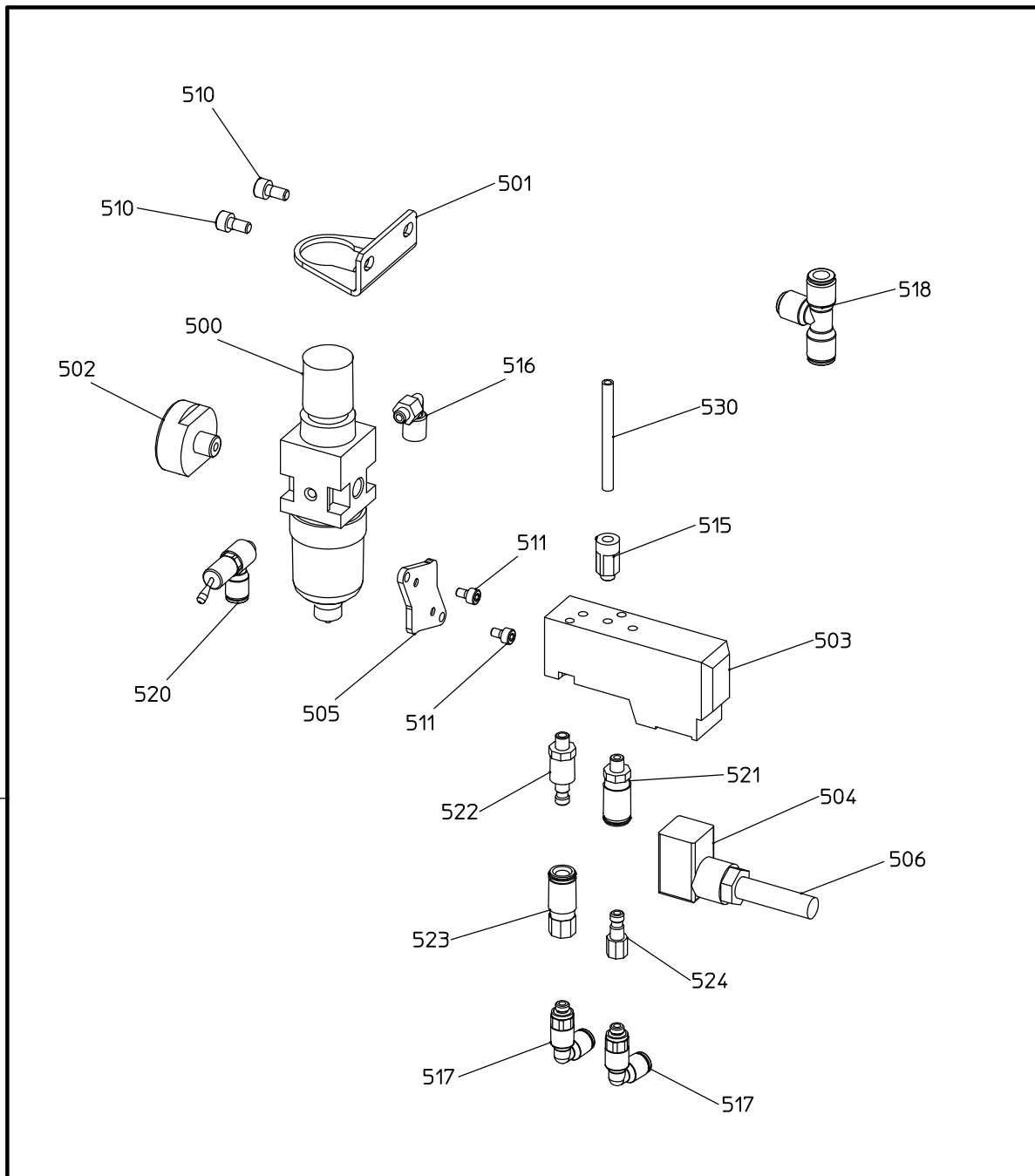
Material		B	09.06.2006	BIR201			
Kantenbruch allgemein							
Werkstoff Behandlung							
Oberflächen Behandlung							

ARTIKEL Nr.	.	Ersatz für	Ersetzt durch				
Kontaktoeler	Maßstab 1:2		Gezeichnet	30.03.2006	BIR201		
			Gesehen	30.03.2006	BIR201		

Schleuniger [®] To Be Precise.	Schleuniger AG Fabrikstrasse 172 4716 Welschenrohr/Switzerland	420.109.001	Änd.Index
			B

6.8 KIT FOR PNEUMATIC APPLICATORS #420.111.001

Pos.	Material	Drawing #	Further information
500	2.0772	0	
501	2.0846	0	
502	2.0773	0	
503	2.0949	0	
504	404127	0	
505	2.0950	0	
510	1.0232	0	
511	1.0006	0	
515	2.0832	0	
516	2.0831	0	
517	2.0932	0	
518	407434	0	
520	2.2063	0	
521	2.2058	0	
522	2.2059	0	
523	2.2060	0	
524	2.2061	0	
530	2.2062	0	



Nennmass	über bis	0 50	50 150	150 500	500 1000	1000 3000	3000 5000
Allgemein	Toleranzen	± 0,1	± 0,2	± 0,3	± 0,4	± 0,5	± 0,8

Material		A	06.09.2011	CAD0198			
Kantenbruch allgemein		B	06.09.2011	CAD0198			
Werkstoff Behandlung							
Oberflächen Behandlung							

ARTIKEL Nr.	.	Ersatz für	Ersetzt durch				
-------------	---	------------	---------------	--	--	--	--

Kit für pneumatische Werkzeuge	Maßstab 1:5		Gezeichnet	25.04.2005	MAR201
			Gesehen	25.04.2005	MAR201

Schleuniger [®] To Be Precise.	Schleuniger CrimpTec AG Fabrikstrasse 172 4716 Welschenrohr/Switzerland	420.111.001	Änd.Index
			B

